








Know Everything and Do Anything in Seconds With Tanium Core

-  Ask any question, take any action in plain English
-  Hunt proactively for new vulnerabilities and threats
-  Find file and process anomalies
-  Search for vulnerable applications by name or version
-  Monitor and remediate endpoint agent health
-  Create custom sensors to monitor any endpoint property
-  Address ad-hoc security and management needs, today and in the future

Tanium Core Platform

Give security and IT operations teams the power to secure, control and manage millions of endpoints in seconds.

Overview

Tanium is the first and only enterprise platform to secure and manage endpoints regardless of scale or size. Tanium's patented linear-chain architecture turbocharges security and operations tasks so that actions previously taking hours or even days can be accomplished in seconds.

With the Tanium Core Platform, security and IT operations teams can ask any question about their environment in plain English, retrieve accurate and complete data, and immediately take any corrective action needed directly on the endpoint.

Vivid data visualization capabilities make it easier to measure and communicate insights across the environment. Extensible and open, Tanium Core Platform contains a variety of ready-to-use connectors, and its open APIs allow seamless integration of endpoint data with other IT systems.

With a minimal infrastructure that scales to support millions of endpoints, Tanium Core Platform dramatically reduces total cost of ownership while also being resilient to rapid rates of change inherent in today's complex network environments.

Key components of Tanium Core

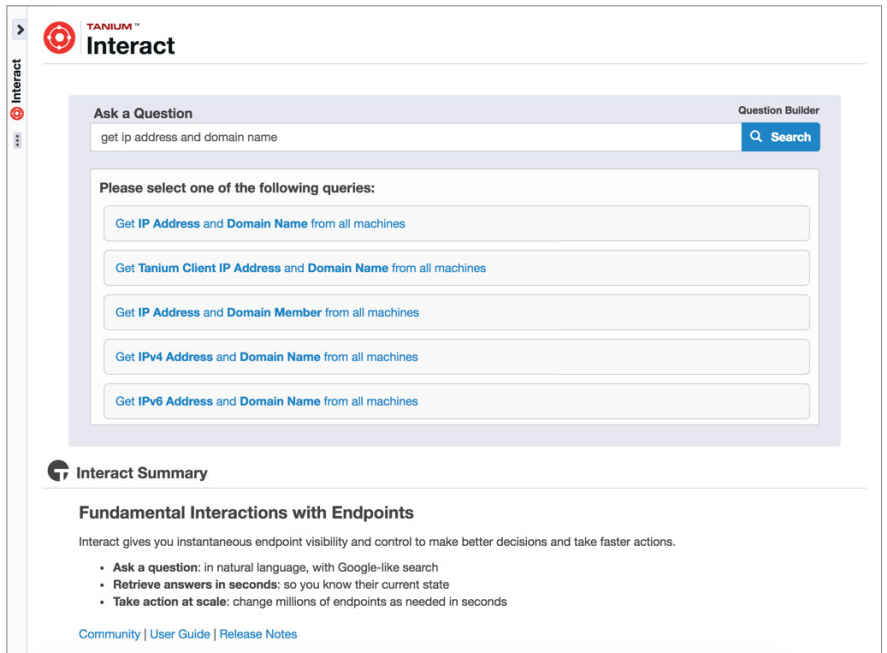
Tanium Interact

Tanium Core Platform provides a natural language parser, allowing questions to be structured in plain English and enabling users of all skill levels. Organizations can use Interact to ask dynamic questions, examine results, take action, save questions, and review dashboards.

Tanium Core Platform is extensible and supports industry-standard scripting languages, so it's easy to gather any data or support any change across endpoints as needed.

With Tanium Authoring, security and IT professionals can create new Sensors and Packages that extend Tanium use cases and customize them for particular objectives.

For example, when a new application comes into use, an author can write a Sensor script that maintains data about the installed or running application and a Package script that takes action to stop or start it. Sensors use familiar, industry-standard scripting languages rather than arcane, proprietary coding syntax.



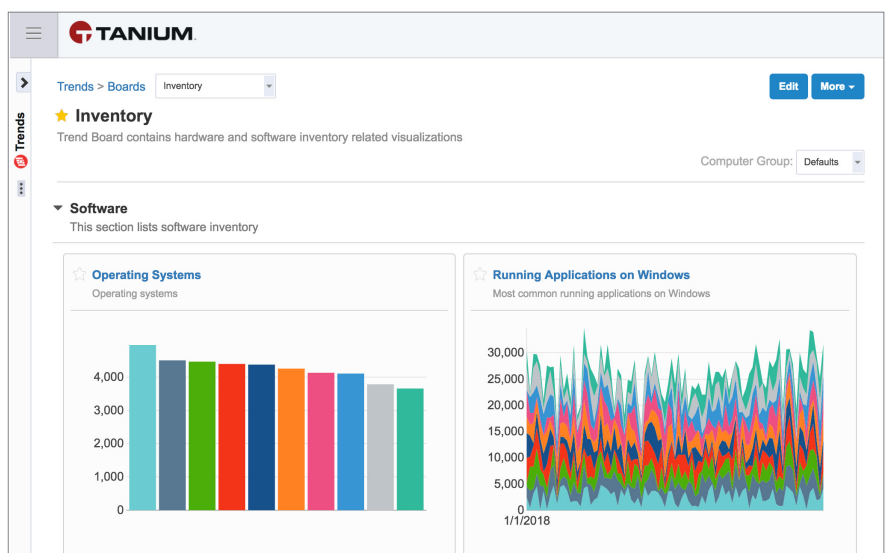
Ask simple questions and review comprehensive results in seconds with Tanium Interact.

Tanium Trends

Tanium Trends enables continuous measurement and reporting on key security and operations metrics, such as patches and vulnerabilities, encryption, firewall status, hardware and software inventory, uptime, and disk usage.

Tanium Trends reporting is customizable. Teams can report on any single metric or combination of metrics that are meaningful based on the needs of the organization.

With drill-down capabilities and tight integration into Tanium Core Platform, Tanium Trends also enables faster insights and the ability to pivot instantly to remediate issues.



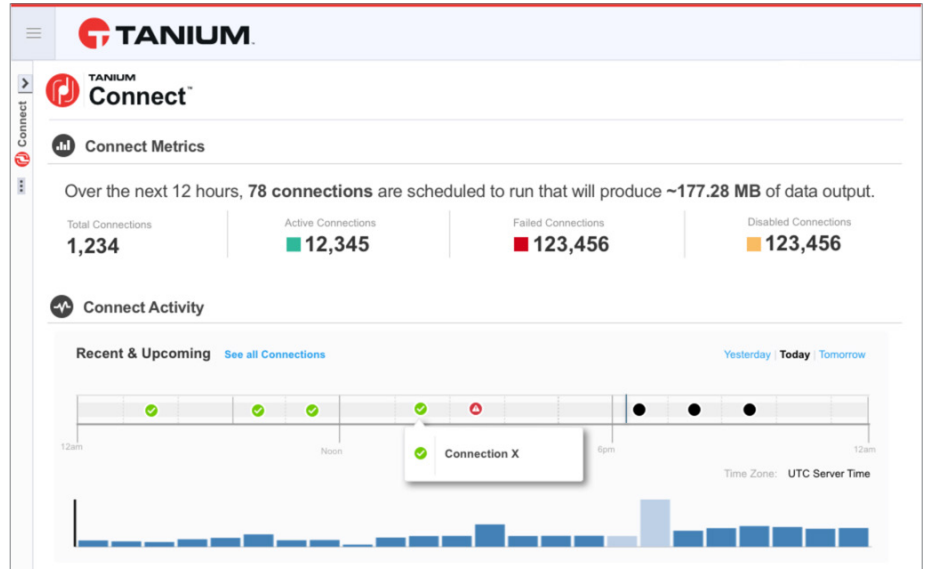
Visualize, understand, and communicate the true state of your security and operations with Tanium Trends.

Tanium Connect

The Tanium Connect integration layer enriches external or third-party systems with up-to-the-second data from every endpoint in the environment.

Tanium Connect can feed endpoint data into systems such as SIEMs, log analytic tools, help desk ticketing systems, CMDBs and big data clusters.

By addressing the narrow focus and timeliness of the data typically available to these systems, Tanium Connect enables shared visibility across teams and dramatically reduces resolution time for even the most complex challenges in securing and managing endpoints at scale.



Integrate Tanium with a SIEM, log analytics tools, and threat feeds with Tanium Connect.

Enterprise Ready

Tanium Product Modules


Tanium Core Platform is the foundation for Tanium Product Modules. Product Modules are purpose-built extensions geared for specific security and management problems, such as threat response, patching, checking for file integrity, or ensuring compliance. Tanium allows organizations to save cost by consolidating point tools and to increase service levels with the benefits of the speed, scale and completeness that Tanium delivers.

Purpose-Built for Speed and Scale

Zone Servers enable every internet-connected roaming machine to stay in contact with the Tanium Core Platform, allowing them to answer questions or perform targeted actions as if they were on the enterprise network. Kerberos-based authentication leverages existing Active Directory infrastructure, credentialing and security policies. Role-based access control (RBAC) enables granting roles with permissions to users and user groups for specific module access and discrete functions such as asking questions and executing existing actions on specific sets of content. This permission can be extended to permissions for administrative functions, such as creating users or viewing system status.



Tanium gives the world's largest enterprises and government organizations the unique power to secure, control and manage millions of endpoints across the enterprise within seconds. With the unprecedented speed, scale and simplicity of Tanium, security and IT operations teams now have complete and accurate information on the state of endpoints at all times to more effectively protect against modern day threats and realize new levels of cost efficiency in IT operations.

 tanium.com

 [@Tanium](https://twitter.com/Tanium)

 info@tanium.com